

INTRODUCING NORTON GHOST 6.0



Fixes PC user problems

NOW

Before they become IT problems

LATER

INSIDE: Free 30-Day Trial offer!

SYMANTEC.TM

Symantec Corporation
10201 Torre Avenue, Cupertino, CA 95014-2132
www.symantec.com

BULK RATE
U.S. POSTAGE
PAID
SYMANTEC



Open now for a
FREE limited-time offer!

FIX

**PC user problems
before they become IT**

PROBLEMS

SYMANTEC.TM

**Invest time
and money to**

RECOVER

**from
PC failures...**

Or use

**NORTON
GHOST™ 6.0**

**to just make your
problems disappear.**

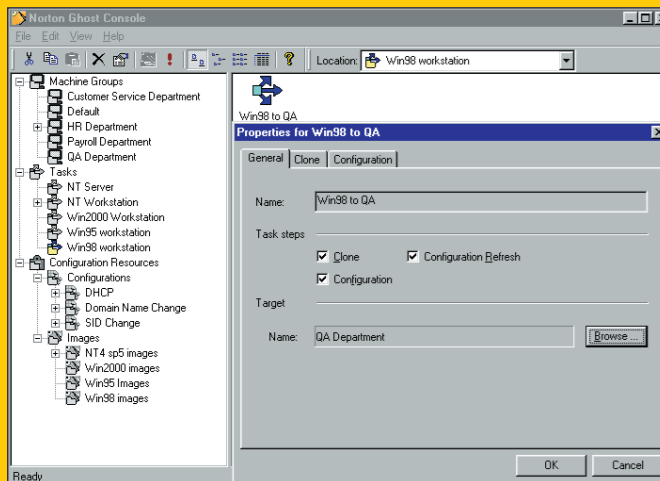
The ULTIMATE PC



PC failures take time, waste money and use hours of IT staff. Recovering

from them just takes Norton Ghost™ 6.0.

This powerful software solution can save your enterprise staff time and money, while ensuring that your IT resources are reserved for enterprise-critical tasks. To reduce the drudgery of manually setting up and rolling out new PCs, updating existing PCs, and recovering failed PCs, Norton Ghost 6.0 is the “must have” management and help desk tool.



Norton Ghost™ 6.0 takes an exact image of a PC's hard drive, all hidden, visible and active files that make up its operating system, apps and configuration settings.

You can then make copies of this cloned image onto any number of PCs – simultaneously – to create completely identical installations, reduce rollout times and upgrade jobs by up to 90%.

Deployment SOLUTION for PC Restoration, Installation and Maintenance.

Clone multiple hard drives at once with the Norton Ghost Console.

This centralized console lets your IT Managers visually group targeted machines for cloning across your network - without attending to the workstation. Spend minutes, not days, to reduce PC roll out and upgrade times by up to 90%.

Remotely manage the cloning of any PC.

The Norton Ghost Console also lets you clone a PC without having to physically visit the machine with a Boot disk.

Recover files and hard drives easily after failures or user errors.

Make a complete, secure backup of PC system files, including OS, applications and critical data. The Ghost Explorer utility restores individual files and directories from the hard drive image, so you'll never worry about critical file losses again.

Apply customized information to every machine after configuration.

Critical workstation configuration data is stored in the Norton Ghost Console, enabling the quick re-configuration of a machine after cloning. This includes such data as: Machine Name, Workgroup, Domain, Machine Description and TCP/IP Settings.

MultiCast Assist Boot Wizard easily creates Ghost boot disks.

A graphical wizard interface walks the administrator through the simple process of creating a Ghost client boot disk and Windows® 2000 Remote Install Service boot images – an easier way to copy files from the command line.

Resize and clone Linux® operating system partitions.

You can quickly resize and clone Ghost partitions with full Linux functionality and support.

Try Norton Ghost™ 6.0 and Norton Ghost for Netware 2.0 FREE!
Call today for your 30-Day trial CD-ROM.

Need to Reconfigure, Clone and Restore Novell® NetWare Servers? Try Norton Ghost for NetWare 2.0.

As the first product to fully support Novell NetWare, Norton Ghost for NetWare is the premier rollout, hardware migration tool and data restoration utility for managing, upgrading, repairing, or administering Novell NetWare servers. It lets you:

- ▶ **Clone NetWare Servers** – Set up a single NetWare server, image the drive, and duplicate that image across your network.
- ▶ **Assist in hardware migration and resizing partitions** – Has the unique ability to automatically duplicate or clone entire disks, NetWare Partitions, or NetWare Volumes by copying information from the source to the target disk. Eliminates the need to completely reload NetWare.
- ▶ **Restore a NetWare server in minutes, not hours** – Just pull the original image and configuration off the server from another server, CD-ROM, or JAZ® drive in about an hour. No need to reload NetWare (3-5 hours), load a tape backup utility and associated driver (1 hour), and restore the server from tape (3-9 hours). You save as much as 15 hours of precious IT time per server.
- ▶ **Save the entire contents of a disk to a single disk image file** – Then store it on a Network Server, SCSI Tape, CD-ROM, JAZ or ZIP® Drive for backup, or for cloning copies of the original disk.
- ▶ **Deliver real TCO benefits** – Time and cost savings are potentially vast.

Get your FREE 30-Day trial CD-ROM today!

Thousands of companies rely on it to save time, money and IT-draining resources while restoring disks and configuring, cloning and upgrading their PCs.

Take advantage of this limited-time offer today. Call for your FREE CD-ROM right now!

1-800-745-6054.

SYMANTEC™

To order your Norton Ghost™ 6.0/ Norton Ghost for Netware 2.0 30-day trialware, call toll-free

1-800-745-6054.

Trust the Leader

Since 1982, Symantec has been one of the world's leading providers of desktop and network software. Today, more than 30 million people trust Symantec technology to help them work faster and more productively, and to give them more control over their computing experience.

System Requirements

Hardware/Software	Minimum	Recommended
Processor	386SX	486 or above
RAM	4 MB (8 MB for NTFS)	16 MB
Operating System	DOS 5.0 or above	DOS 5.0 or above
Monitor	VGA	VGA
Pointing Device	No pointing device required	Microsoft compatible mouse

SYMANTEC.TM

- **Easily create Ghost boot disks with the MultiCast Assist Boot Wizard.** A graphical wizard interface walks the administrator, step-by-step, through the creation of a Ghost client boot disk—an easier way to copy files from the command line.
- **Resize and clone Linux® operating system partitions.** You can quickly resize and clone Linux partitions with full Ghost functionality and support.

Use Norton Ghost for NetWare 2.0® to reconfigure, clone, and restore Novell NetWare servers. Cut rollout and upgrade times by up to 90%.

What Norton Ghost 6.0 does for your PCs, Norton Ghost for NetWare 2.0 does for your Novell NetWare server. It's the first product to fully support Novell NetWare, so it's the premier system tool for any company that wants to reduce server rollout and upgrade times by up to 90%. It enables corporations to easily and automatically populate additional NetWare servers across your network, provides a cost-effective means to restore data, a time-saving method to migrate server hardware, and an easy hardware migration to resize NetWare partitions.

Join the companies that have trusted Norton Ghost with over 4 million seats.

Thousands of companies using literally millions of workstations already trust previous versions of Norton Ghost to save them time, money and IT headaches. Why? Because it's inexpensive, sophisticated, and sure to make routine and time consuming functions a breeze. Plus, it can save these companies tens of thousands of dollars in IT staff time.

Best of all, Norton Ghost 6.0 is now even better. It's more robust. It's more feature-rich. And it's the Fast PC Cloning Solution that every company should embrace. Including yours.

Send for your FREE 30-Day trial CD-ROM today!

Today, approximately 50% of IT Departments spend their time restoring PCs, installing software and performing upgrades. If you want to dramatically cut that time to attend to enterprise-critical problems, you need Norton Ghost 6.0.

To order, call us at 1-800-745-6054 by December 31, 1999, and we'll send you a FREE 30-Day trial CD-ROM. Test it for yourself, and see how much time you save restoring workstations, configuring new PCs, rolling out new operating systems or other software and backing up hundreds of hard drives weekly. Also if you're a current licensed customer, ask about our upgrade insurance that offers free upgrades for the life of the contract.

Why spend your IT Department's precious time manually dealing with problems, when you can put Norton Ghost 6.0 to work to easily handle everyday tasks. Automatically. Effortlessly. And efficiently. Please send for your free trial CD-ROM right now!

Sincerely,



Enrique Salem
Vice President, Security & Assistance

PS. Norton Ghost 6.0 saves you time now, and data later. **It's the newest, most cost-effective solution to restore, roll out, configure, upgrade and back up both your company's PCs and servers.** Call 1-800-745-6054 or mail the response card for your free trial CD-ROM today!

*If a junior IS staff member has a salary of \$36,000 per year, and 3 people are assigned to roll out 500 PCs (at 1.5 hours per machine for 2 months), it would cost \$18,000 to roll them out one at a time. Using Norton Ghost 6.0, you would spend just \$300 over 2 days!

LTR-A

TO HELP US SERVE YOU BETTER, PLEASE ANSWER THE FOLLOWING QUESTIONS:

1. Which of the following best describes your organization?			
<input type="checkbox"/> a. Business	<input type="checkbox"/> c. Consultant	<input type="checkbox"/> d. Reseller	<input type="checkbox"/> f. Government
<input type="checkbox"/> b. Academic Institution	<input type="checkbox"/> VAR/Integrator	<input type="checkbox"/> e. Home User	<input type="checkbox"/> g. Computer Mfg./OEM
2. Approximately how many PCs do you have in your organization?			
<input type="checkbox"/> a. 1-9	<input type="checkbox"/> c. 250-1,499		
<input type="checkbox"/> b. 10-249	<input type="checkbox"/> d. 1500+		
3. Would you be interested in a volume purchase?			
<input type="checkbox"/> a. No, just personal use	<input type="checkbox"/> c. 10-249	<input type="checkbox"/> e. 1,500+	
<input type="checkbox"/> b. 2-9	<input type="checkbox"/> d. 250-1,499		
4. When do you plan to purchase?			
<input type="checkbox"/> a. Immediately	<input type="checkbox"/> c. 4-6 months	<input type="checkbox"/> e. 12+ months	
<input type="checkbox"/> b. 1-3 months	<input type="checkbox"/> d. 7-12 months		
5. Is this budgeted already?			
<input type="checkbox"/> a. Yes	<input type="checkbox"/> c. No/Unknown		
<input type="checkbox"/> b. Probably			
6. What is your role in the decision making process?			
<input type="checkbox"/> a. Decision Maker	<input type="checkbox"/> c. Evaluator	<input type="checkbox"/> e. Other	
<input type="checkbox"/> b. Key Influencer	<input type="checkbox"/> d. End User		